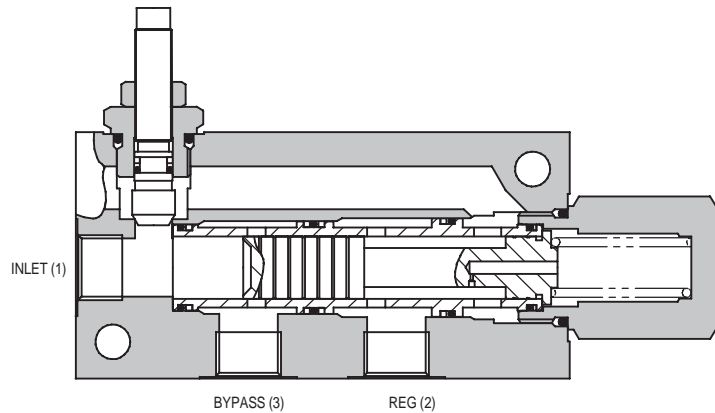
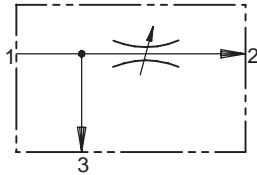




2FP SERIES PRESSURE COMPENSATED

FLOW REGULATOR - PRIORITY STYLE

2FP SERIES



APPLICATION

2FP valves are priority flow regulators. The flow (and actuator speed) will be largely independent of the load and the pressure conditions.

If used to regulate flow from a fixed supply, for example a standard gear or piston pump, the valve will pass the required flow and any surplus flow will be diverted to the bypass port. The bypass flow may be used for a secondary circuit whether the secondary pressure requirement is higher or lower than the regulated pressure.

The valve inlet pressure will be approximately 7 bar (100 psi) more than the regulated or bypass pressure, whichever is higher.

OPERATION

Inlet flow passes through the adjustable orifice and the radial holes in the spool/sleeve assembly then out of the regulated port. The pressure drop across the orifice is sensed at each end of the spool, producing a force which, at the required flow rate, overcomes the spring force. The resultant movement of the spool regulates the flow by opening the radial valve ports to the bypass port and closing the regulated flow ports.

The valve will pass flow in the return direction but this is restricted by the flow path through the control orifice.

FEATURES

Line body construction with three ports allows direct connection into hydraulic systems. Leakproof adjust screw gives easy, accurate adjustment to required flow setting. Hardened and ground working parts give accurate flow control and long working life.

***For applications above 210 bar please consult our technical department or use the steel body option.**

SPECIFICATIONS

Figures based on: Oil Temp = 40°C Viscosity = 40 cSt

Rated Flow	INLET:	
	2FP25	55 litres/min (14 US GPM)
	2FP55	95 litres/min (25 US GPM)
	2FP95	150 litres/min (40 US GPM)
	2FP195	380 litres/min (100 US GPM)
	2FPX5444	380 litres/min (100 US GPM)
	REGULATED:	
	2FP25	30 litres/min (8 US GPM)
	2FP55	55 litres/min (14 US GPM)
	2FP95	95 litres/min (25 US GPM)
	2FP195	160 litres/min (42 US GPM)
	2FPX5444	160 litres/min (42 US GPM)
Max Pressure	2FP25/55/95/195	210 bar (3000 psi)
	2FPX5444	350 bar (5000 psi)
Material	All working parts hardened and ground steel	
Body Material	Standard aluminium (up to 210 bar*) Add suffix '377' for steel option	
Mounting Position	Line mounted	
Weight	2FP25/2FP55	0.99 kg (2.20 lbs)
	2FP95	1.83 kg (4.03 lbs)
	2FP195	3.77 kg (8.30 lbs)
	2FPX5444	10.79 kg (23.75 lbs)
Seal Kit Number	2FP25/55	SK192 (Nitrile) SK192V (Viton)
	2FP95	SK222 (Nitrile) SK222V (Viton)
	2FP195	SK412 (Nitrile) SK412V (Viton)
Recommended Filtration Level	BS5540/4 Class 18/13 (25 micron nominal)	
Operating Temp	-20°C to +90°C	
Nominal Viscosity Range	5 to 500 cSt	

9

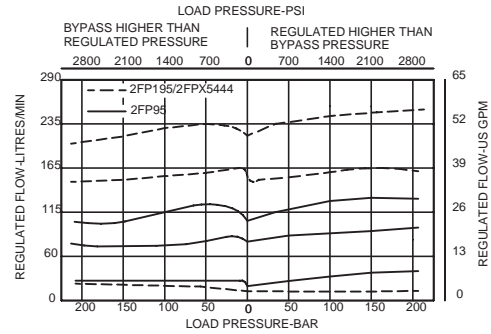
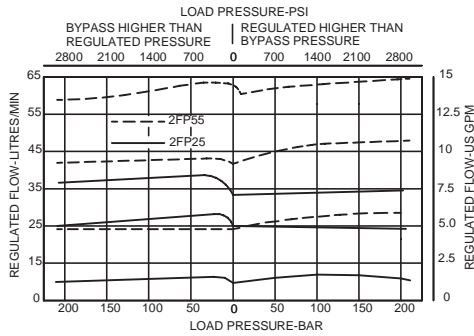
Integrated Hydraulics Ltd

Collins Road, Heathcote Ind. Est., Warwick, CV34 6TF, UK.
Tel: +44 (0) 1926 881171 Fax: +44 (0) 1926 315729
Website: www.integratedhydraulics.com

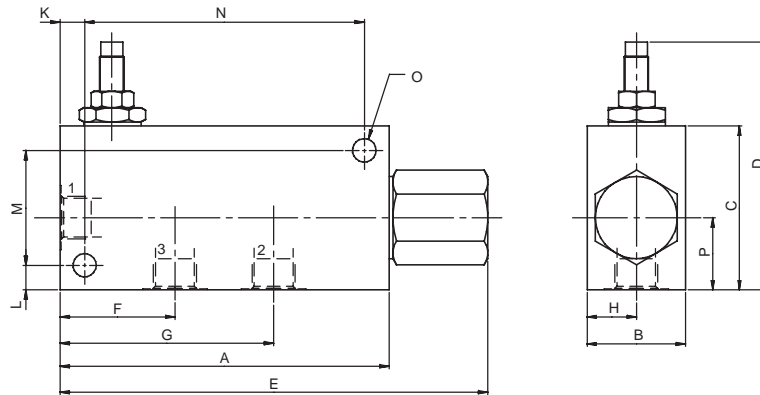
Integrated Hydraulics Inc

7047 Spinach Drive, Mentor, Ohio 44060, USA
Tel: (440) 974 3171 Fax: (440) 974 3170
Website: www.integratedhydraulics.com

PERFORMANCE



COMPLETE VALVE



Basic Code	Port Size	A	B	C	D	E	F	G	H	K	L	M	N	O	P
2FP25	3/8"	127	38	63.5	99	165	44.5	82.5	19	9.5	9.5	44.5	108	9	28.5
2FP55	1/2"	130	38	63.5	99	168	47.5	85.5	19	12.5	9.5	44.5	108	9	28.5
2FP95	3/4"	152.5	51	76	111	190	54.5	100	25.5	8	8	60	136.5	10.5	32
2FP195	1"	146	63.5	127	162	202	41	99	32	13	13	101.5	120.5	10.5	67
2FPX5444	1"	152	63.5	133	168	242	48	105	32	13	13	108	127	13.5	66.5

Where measurements are critical request certified drawings

ORDERING CODE EXAMPLE

2FP P 6W 95 S**

Basic Code
2FP = Complete Valve

Adjustment Means
P = Leakproof Screw Adjustment
R = Handknob Adjustment
D = Detent Adjustment (2FP95 only)
L = Lever Adjustment (2FP95 only)
(See page 9-102 for dimensions)

Port Sizes - Bodied Valves Only
3W = 3/8" BSP 6T = 3/8" SAE
4W = 1/2" BSP 8T = 1/2" SAE
6W = 3/4" BSP 12T = 3/4" SAE
8W = 1" BSP 16T = 1" SAE

Seals

S = Nitrile (For use with most industrial hydraulic oils)
SV = Viton (For high temperature and most special fluid applications)

Adjustable Flow Range

25 = 0- 30 litres/min - 2FP25
55 = 0- 55 litres/min - 2FP55
95 = 0- 95 litres/min - 2FP95
195 = 0-195 litres/min - 2FP195/2FPX5444

We reserve the right to change specifications without notice