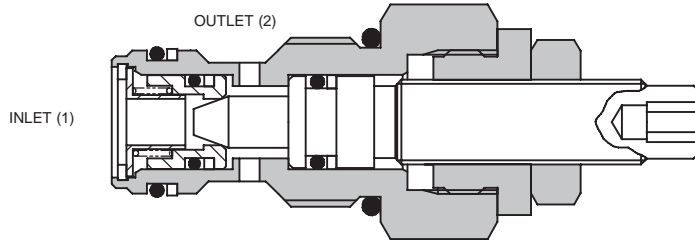
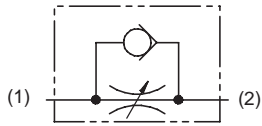




# 2CR RESTRICTOR VALVE

## FINE ADJUSTMENT - POSITIVE SHUT OFF

### 2CR30



### APPLICATION

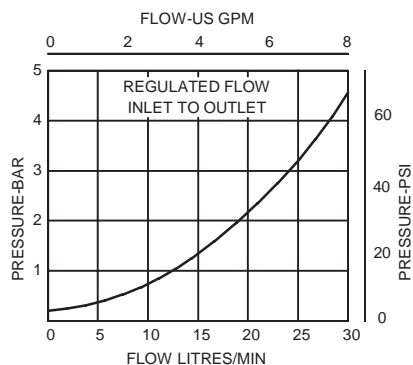
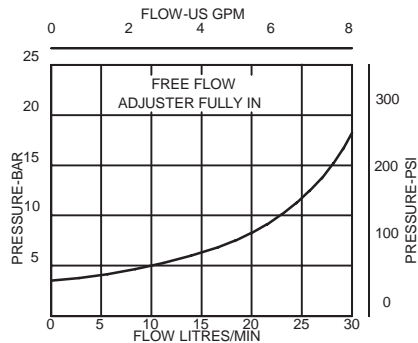
The cartridge restrictor valve range can be set and locked to restrict flow in one direction. A typical use is the speed control of cylinder or other actuators. (For pressure compensated flow control valves, see Section 9). The free flow check allows for meter-in or meter-out actuator control.

### OPERATION

Rotation of the adjustment screw varies the valve opening to give a flow path approximately proportional to the turns of the screw. The check valve allows free flow in one direction.

### PRESSURE DROP

8



### FEATURES

All steel construction with hardened and ground adjustment needle. Cartridge construction for versatility in applications. Sealed adjuster for leak-free adjustment

### SPECIFICATIONS

Figures based on: Oil Temp = 40°C Viscosity = 40 cSt

<b>Rated Flow</b>	30 litres/min (8US GPM)
<b>Max Pressure</b>	350 bar (5000 psi)
<b>Cartridge Material</b>	Working parts hardened and ground steel. Zinc plated body
<b>Body Material</b>	Standard aluminium (up to 210 bar*) Add suffix '377' for steel option
<b>Mounting Position</b>	Unrestricted
<b>Cavity Number</b>	CVA-20-01-0 (See Section 17)
<b>Torque Cartridge into Cavity</b>	45 Nm (33 lbs ft)
<b>Weight</b>	2CR30 0.15 kg (0.33 lbs) 2CR35 0.47 kg (1.03 lbs)
<b>Seal Kit Number</b>	SK687 (Nitrile) SK687V (Viton)
<b>Recommended Filtration Level</b>	BS5540/4 Class 18/13 (25 micron nominal)
<b>Operating Temp</b>	-20°C to +90°C
<b>Leakage</b>	100 millilitres/min nominal (closed)
<b>Nominal Viscosity Range</b>	5 to 500 cSt

\*For applications above 210 bar please consult our technical department or use the steel body option.

### Integrated Hydraulics Ltd

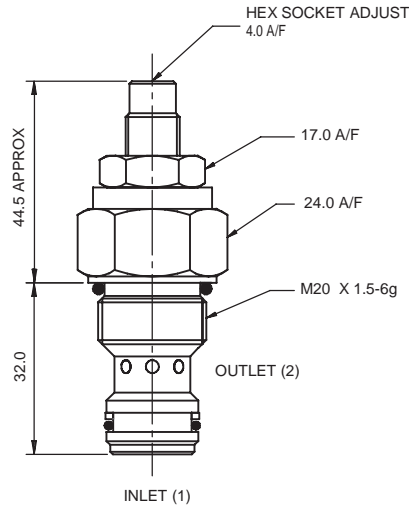
Collins Road, Heathcote Ind. Est., Warwick, CV34 6TF, UK.  
Tel: +44 (0) 1926 881171 Fax: +44 (0) 1926 315729  
Website: [www.integratedhydraulics.com](http://www.integratedhydraulics.com)

### Integrated Hydraulics Inc

7047 Spinach Drive, Mentor, Ohio 44060, USA  
Tel: (440) 974 3171 Fax: (440) 974 3170  
Website: [www.integratedhydraulics.com](http://www.integratedhydraulics.com)

## CARTRIDGE ONLY

**BASIC CODE: 2 CR30**

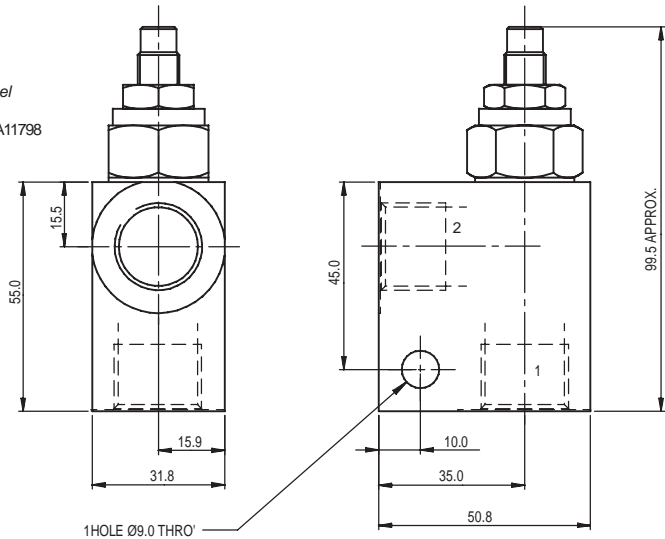


## COMPLETE VALVE 3/8" 1/2" PORTS

**BASIC CODE: 2 CR35**

Body ONLY part numbers

BSP, aluminium		SAE, aluminium		BSP, steel		SAE, steel	
3/8"	A13758	3/8"	A10780	3/8"	A13615	1/2"	A11798
1/2"	A8532	1/2"	A10781				



Where measurements are critical request certified drawings

## ORDERING CODE EXAMPLE

**2CR\*\* P 3W S**

### Basic Code

2CR30 = Cartridge Only  
2CR35 = Cartridge and Body

### Adjustment Means

P = Leakproof Screw Adjustment  
R = Handknob Adjustment  
(See page 8-102 for dimensions)

### Port Sizes - Bodied Valves Only

3W = 3/8" BSP      6T = 3/8" SAE  
4W = 1/2" BSP      8T = 1/2" SAE

### Seals

S = Nitrile (For use with most industrial hydraulic oils)  
SV = Viton (For high temperature and most special fluid applications)