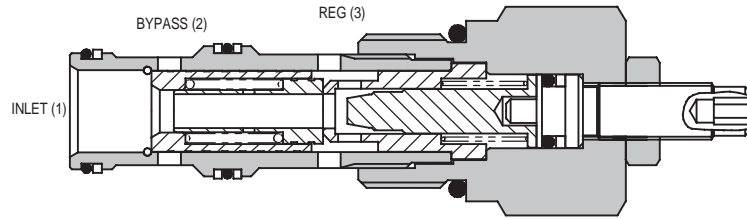
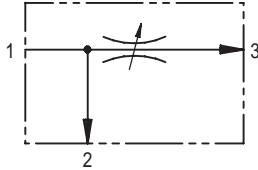




# 2CFP60 SERIES PRESSURE COMPENSATED

## FLOW REGULATOR - PRIORITY STYLE

### 2CFP60



### APPLICATION

2CFP valves are priority flow regulators. The flow (and actuator speed) will be largely independent of the load and the pressure conditions.

If used to regulate flow from a fixed supply, for example a standard gear or piston pump, the valve will pass the required flow and any surplus flow will be diverted to the bypass port. The bypass flow may be used for a secondary circuit whether the secondary pressure requirement is higher or lower than the regulated pressure.

The valve inlet pressure will be approximately 7 bar (100 psi) more than the regulated or bypass pressure, whichever is higher.

### OPERATION

Inlet flow passes through the adjustable orifice and the radial holes in the spool/sleeve assembly then out of the regulated port. The pressure drop across the orifice is sensed at each end of the spool, producing a force which, at the required flow rate, overcomes the spring force. The resultant movement of the spool regulates the flow by opening the radial valve ports to the bypass port and closing the regulated flow ports.

The valve will pass flow in the return direction but this is restricted by the flow path through the control orifice.

### FEATURES

Cartridge construction gives versatility of application. A valve may be fitted into a line body, a custom designed Hydraulic Integrated Circuit or directly into a cylinder or other actuator. Leakproof adjust screw gives easy, accurate adjustment to required flow setting. Hardened and ground working parts give accurate flow control and long working life.

### SPECIFICATIONS

Figures based on: Oil Temp = 40°C Viscosity = 40 cSt

<b>Rated Flow</b>	Inlet: 90 litres/min (24 US GPM) Reg: 4-60 litres/min (1-16 US GPM)
<b>Max Pressure</b>	350 bar (5000 psi)
<b>Cartridge Material</b>	All working parts hardened and ground steel. Zinc plated body.
<b>Body Material</b>	Standard aluminium (up to 210 bar*) Add suffix '377' for steel option.
<b>Mounting Position</b>	Unrestricted
<b>Cavity Number</b>	CVA-27-04-0 (See Section 17)
<b>Torque Cartridge into Cavity</b>	75 Nm (55 lbs ft)
<b>Weight</b>	2CFP60      0.16 kg (0.35 lbs) 2CFP65      1.80 kg (3.76 lbs)
<b>Seal Kit Number</b>	SK579 (Nitrile)      SK579V (Viton)
<b>Recommended Filtration Level</b>	BS5540/4 Class 18/13 (25 micron nominal)
<b>Operating Temp</b>	-20°C to +90°C
<b>Nominal Viscosity Range</b>	5 to 500 cSt

**\*For applications above 210 bar please consult our technical department or use the steel body option.**

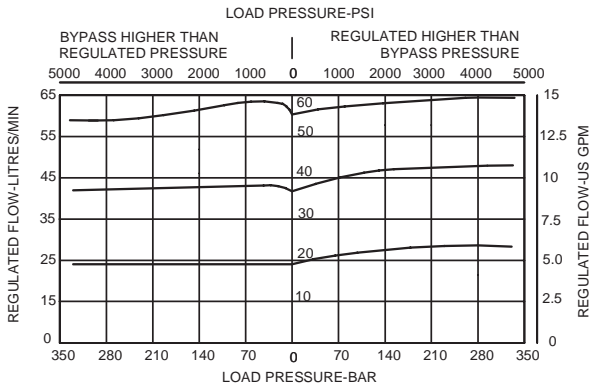
### Integrated Hydraulics Ltd

Collins Road, Heathcote Ind. Est., Warwick, CV34 6TF, UK.  
Tel: +44 (0) 1926 881171 Fax: +44 (0) 1926 315729  
Website: www.integratedhydraulics.com

### Integrated Hydraulics Inc

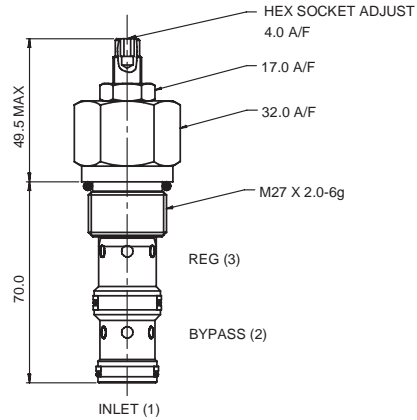
7047 Spinach Drive, Mentor, Ohio 44060, USA  
Tel: (440) 974 3171 Fax: (440) 974 3170  
Website: www.integratedhydraulics.com

## PERFORMANCE



## CARTRIDGE ONLY

BASIC CODE: 2CFP60



## COMPLETE VALVE

1/2" PORTS

BASIC CODE: 2CFP65

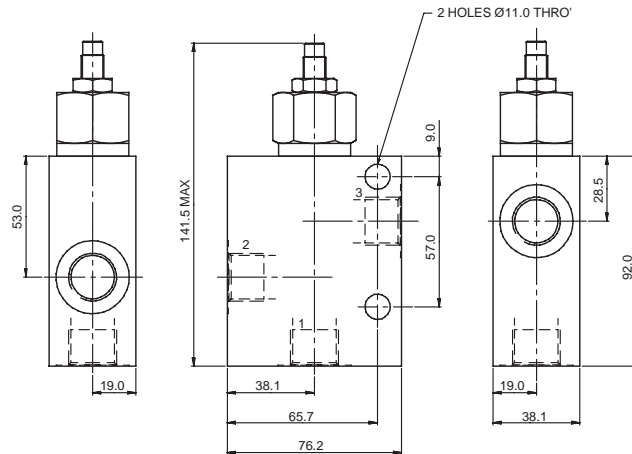
Body ONLY part numbers

BSP, aluminium  
1/2" B12631

SAE, aluminium  
1/2" B10820

BSP, steel  
1/2" B13664

SAE, steel  
1/2" B11566



Where measurements are critical request certified drawings

9

## ORDERING CODE EXAMPLE

**2CFP\*\* P 4W 4 S**

Basic Code

2CFP60 = Cartridge Only

2CFP65 = Cartridge and Body

Adjustment Means

P = Leakproof Screw Adjustment

R = Handknob Adjustment

(See page 9-102 for dimensions)

Port Sizes - Bodied Valves Only

4W = 1/2" BSP

8T = 1/2" SAE

Seals

S = Nitrile (For use with most industrial hydraulic oils)

SV = Viton (For high temperature and most special fluid applications)

Adjustable Flow Range

4 = 4-40 litres/min. Std setting 30 litres

6 = 6-60 litres/min. Std setting 40 litres