

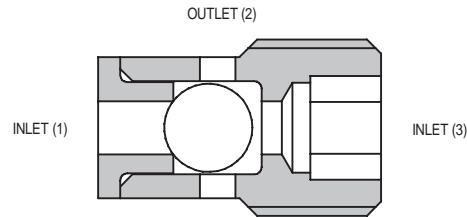
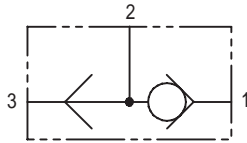


# 1SH10 SHUTTLE VALVE

## BALL TYPE

FOR SERVICE INSTRUCTIONS, PLEASE CONTACT MAIN OFFICE.

### 1SH10



THIS COMPONENT IS NOT TESTED IF SUPPLIED AS CARTRIDGE INSERT ONLY

### APPLICATION

This valve provides a means of sensing the higher pressures between two lines on a hydraulic circuit allowing this line to be used for an auxiliary function such as the removal of a mechanically applied brake, the operation of a gauge or to give a remote pressure sensing line for the control of a separate valve.

### OPERATION

When a higher pressure is sensed at inlet (1) than at inlet (3) the ball within the cartridge is forced against a seat opening the higher pressure to outlet (2). When the higher pressure appears at inlet (3) the ball is forced against another seat which blocks inlet (1) and opens up inlet (3) to outlet (2).

### FEATURES

Cartridge design enabling speedy servicing when mounted in a body or in a composite manifold.

### SPECIFICATIONS

Figures based on: Oil Temp = 40°C Viscosity = 40 cSt

<b>Rated Flow</b>	20 litres/min (5 US GPM)
<b>Max Working Pressure</b>	350 bar (5000 psi)
<b>Cartridge Material</b>	All working parts hardened and ground steel. External surfaces zinc plated
<b>Mounting Position</b>	Unrestricted
<b>Cavity Number</b>	A16927
<b>Torque Cartridge into Cavity</b>	8-10 Nm (Use Loc-Tite 542)
<b>Weight</b>	0.05 kg (0.11 lbs)
<b>Recommended Filtration Level</b>	BS5540/4 Class 18/13 (25 micron nominal)
<b>Operating Temp</b>	-20°C to +90°C
<b>Leakage</b>	0.6 millilitres/min max
<b>Nominal Viscosity Range</b>	5 to 500 cSt

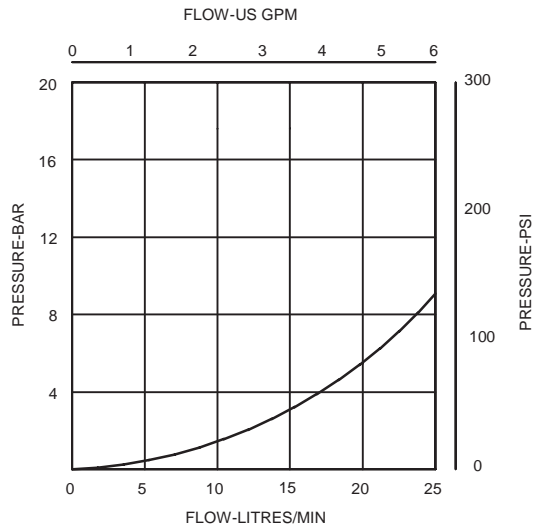
### Integrated Hydraulics Ltd

Collins Road, Heathcote Ind. Est., Warwick, CV34 6TF, UK.  
Tel: +44 (0) 1926 881171 Fax: +44 (0) 1926 315729  
Website: www.integratedhydraulics.com

### Integrated Hydraulics Inc

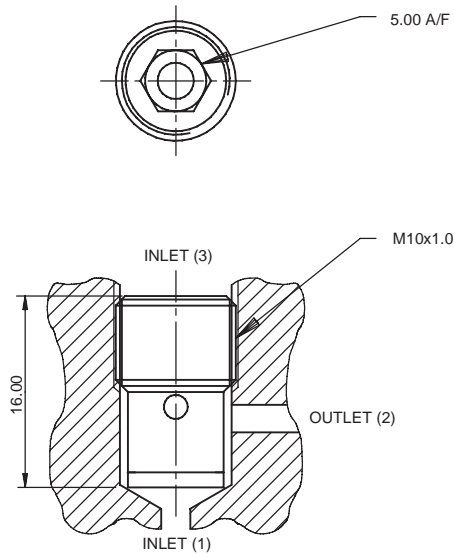
7047 Spinach Drive, Mentor, Ohio 44060, USA  
Tel: (440) 974 3171 Fax: (440) 974 3170  
Website: www.integratedhydraulics.com

**PRESSURE DROP**



**CARTRIDGE ONLY**

USING LOC-TITE 542,  
TORQUE CARTRIDGE TO  
8-10 NM AGAINST THE  
BOTTOM OF THE CAVITY.



Where measurements are critical request certified drawings

**ORDERING CODE EXAMPLE**

**1SH10**

**Basic Code** \_\_\_\_\_  
**1SH10** = Cartridge Only

We reserve the right to change specifications without notice