

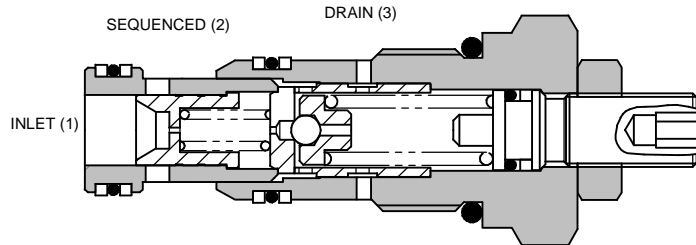
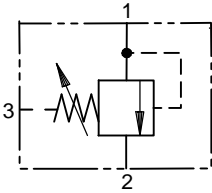


1PS SERIES SEQUENCE VALVE

PILOT OPERATED (ISO CAVITY NUMBER: 7789-22-6-0-90)

1PS60

SLIDING SPOOL TYPE



4

APPLICATION

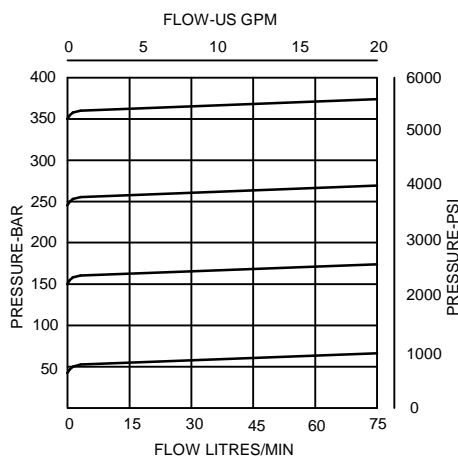
Pilot operated models are best suited for higher flows which may vary widely to:

1. Provide ordered or sequenced series of operations as in a clamp and drill circuit.
2. Serve as a relief valve where oil viscosity or restrictions in the downstream line would cause excessive back pressure. The separate spring chamber drain makes the sequence valve insensitive to this back pressure. Available with or without built-in reverse flow checks.

OPERATION

As in the pilot operated relief, when the setting of the valve is exceeded the pilot section opens. This pilot flow causes a pressure imbalance opening the main section and allowing flow to a secondary circuit (sequenced line).

PRESSURE DROP



*For applications above 210 bar please consult our technical department or use the steel body option.

FEATURES

Hardened steel working parts give long, trouble-free life. Selectively matched honed assemblies give accurate performance.

SPECIFICATIONS

Figures based on: Oil Temp = 40°C Viscosity = 40 cSt

Rated Flow	60 litres/min (16 US GPM)
Max Setting	350 bar (5000 psi)
Cartridge Material	Working parts hardened and ground steel. External surfaces zinc plated
Body Material	Standard aluminium (up to 210 bar*) Add Suffix '377' for steel option
Mounting Position	Unrestricted
Cavity Number	CVA-22-06-0 (See Section 17)
Torque Cartridge into Cavity	60 Nm (44 lbs ft)
Weight	1PS60 0.16 kg (0.35 lbs) 1PS65 0.50 kg (1.10 lbs) 1PS66 1.10 kg (2.42 lbs)
Seal Kit Number	SK618 (Nitrile) SK618V (Viton)
Filtration	BS5540/4 Class 18/12 (25 micron nominal)
Operating Temp	-20°C to +90°C
Leakage	35 millilitres/min @ 280 bar
Nominal Viscosity Range	5 to 500 cSt

Integrated Hydraulics Ltd

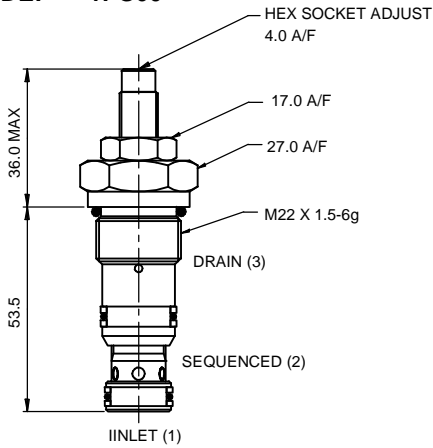
Collins Road, Heathcote Ind. Est., Warwick, CV34 6TF, UK.
Tel: +44 (0) 1926 881171 Fax: +44 (0) 1926 315729
Website: www.integratedhydraulics.com

Integrated Hydraulics Inc

7047 Spinach Drive, Mentor, Ohio 44060, USA
Tel: (440) 974 3171 Fax: (440) 974 3170
Website: www.integratedhydraulics.com

CARTRIDGE ONLY

BASIC CODE: 1PS60



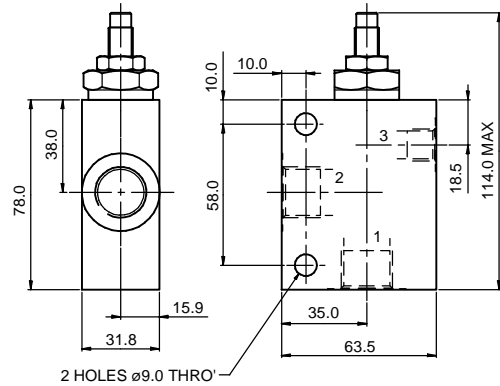
COMPLETE VALVE

3/8" 1/2" PORTS

BASIC CODE: 1PS65

Body ONLY part numbers

BSP, aluminium	SAE, aluminium	BSP steel	SAE, steel
3/8" B12751	3/8" B10796	3/8" B17070	
1/2" B8533	1/2" B10797		1/2" B11802



COMPLETE VALVE

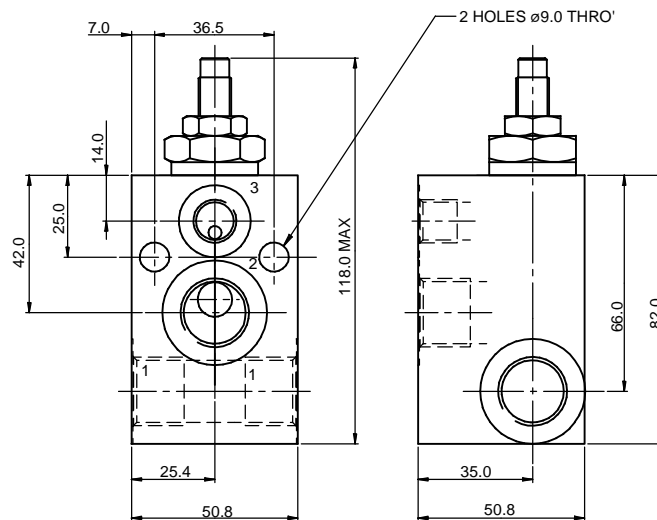
1/2" PORTS

BASIC CODE: 1PS66

Body ONLY part numbers

BSP, aluminium
1/2" B13482

BSP, steel
1/2" B13483



Where measurements are critical request certified drawings

ORDERING CODE EXAMPLE

1PS P 3W 35 S**

Basic Code

1PS60 = Cartridge Only
1PS65 = Cartridge and Body
1PS66 = Cartridge and Body through ported

Adjustment Means

P = Leakproof Screw Adjustment
R = Handknob Adjustment
G = Tamperproof Cap
(See page 4-102 for dimensions)

Port Sizes - Bodied Valves Only

3W = 3/8" BSP **6T** = 3/4" SAE
4W = 1/2" BSP **8T** = 1/2" SAE
1/4" BSP Drain Ports 1/4" SAE Drain Ports

Seals

S = Nitrile (For use with most industrial hydraulic oils)
SV = Viton (For high temperature and most special fluid applications)

Pressure Range @ 4.8 l/min

10 = 7-100 bar. Std setting 35 bar
20 = 10-210 bar. Std setting 100 bar
35 = 20-350 bar. Std setting 280 bar
Std setting made at 4.8 litres/min

We reserve the right to change specifications without notice