

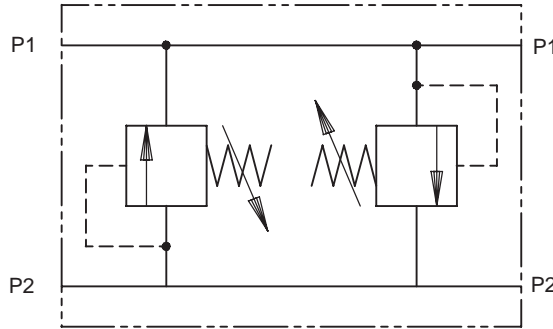


1DDR35 SERIES DUAL RELIEF VALVE

DIRECT ACTING

1DDR35

POPPET TYPE



3

APPLICATION

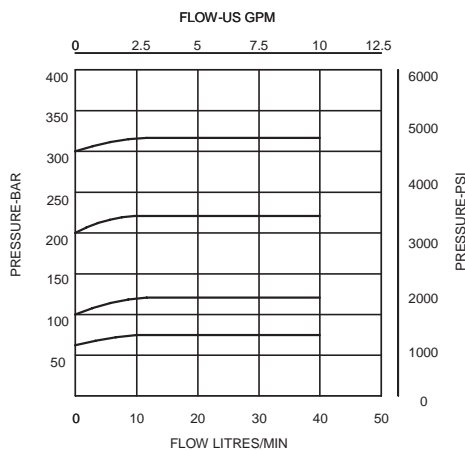
To protect directional valves and actuators from shock or surge pressures induced by changes in direction or sudden stops which create excessive load conditions.

OPERATION

The dual relief is of the cross line type, where exhaust oil from one line is transferred to the other, negating the need for a separate tank line. It also prevents cavitation when used in conjunction with a closed centre directional valve. For greatest protection the valve should be mounted as close to the actuator or motor as possible.

Note for single rod cylinders, anti-cavitation check valves and a separate tank line are necessary. See page number 3-151.

PRESSURE DROP



FEATURES

Soft start and stop with fast acting operation to give maximum protection to expensive actuators. Reduces plumbing to a minimum.

SPECIFICATIONS

Figures based on: Oil Temp = 40°C Viscosity = 40 cSt

| | |
|-------------------------------------|--|
| Rated Flow | 30 litres/min (8 US GPM) |
| Max Setting | 350 bar (5000 psi) |
| Cartridge Material | Working parts hardened and ground steel. External surfaces zinc plated |
| Body Material | Standard aluminium (up to 210 bar*) Add Suffix '377' for steel option |
| Mounting Position | Line mounted |
| Weight | 0.58 kg (1.28 lbs) |
| Seal Kit Number | SK243 (Nitrile) SK243V (Viton) |
| Recommended Filtration Level | BS5540/4 Class 18/13 (25 micron nominal) |
| Operating Temp | -20°C to +90°C |
| Leakage | 0.3 millilitres/min max (5 dpm) |
| Nominal Viscosity Range | 5 to 500 cSt |

*For applications above 210 bar please consult our technical department or use the steel body option.

Integrated Hydraulics Ltd

Collins Road, Heathcote Ind. Est., Warwick, CV34 6TF, UK.
Tel: +44 (0) 1926 881171 Fax: +44 (0) 1926 315729
Website: www.integratedhydraulics.com

Integrated Hydraulics Inc

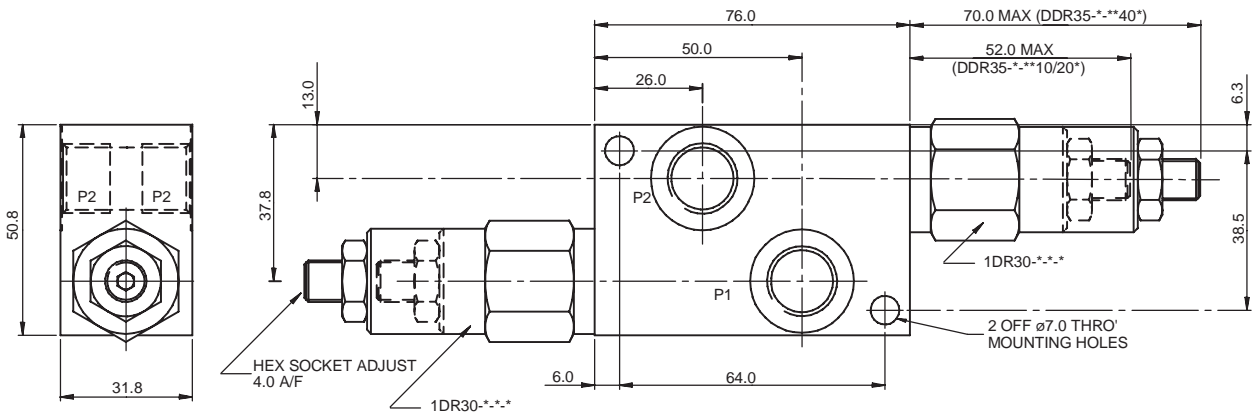
7047 Spinach Drive, Mentor, Ohio 44060, USA
Tel: (440) 974 3171 Fax: (440) 974 3170
Website: www.integratedhydraulics.com

COMPLETE VALVE 3/8" PORTS

BASIC CODE: 1 DDR35

Body ONLY part numbers

| | | |
|-----------------------|-----------------------|-------------------|
| <i>BSP, aluminium</i> | <i>SAE, aluminium</i> | <i>SAE, steel</i> |
| 3/8" B13988 | 3/8" B11489 | 3/8" B11624 |



Where measurements are critical request certified drawings

ORDERING CODE EXAMPLE

1DDR35 P 3W 40 S

Basic Code
1DDR35 = Cartridge and Body

Adjustment Means
P = Leakproof Screw Adjustment
R = Handknob Adjustment
G = Tamperproof Cap

Port Sizes - Bodied Valves Only
3W = 3/8" BSP 6T = 3/8" SAE

Seals
S = Nitrile (For use with most industrial hydraulic oils)
SV = Viton (For high temperature and most special fluid applications)

Pressure Range @ 4.8 l/min
10 = 7-100 bar. Std setting 70 bar
20 = 35-210 bar. Std setting 100 bar
40 = 50-400 bar. Std setting 280 bar
Std setting made at 4.8 litres/min

We reserve the right to change specifications without notice