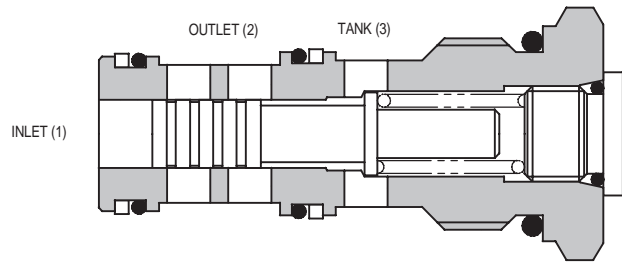
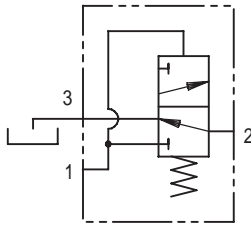




# 1SB10 BRAKE SEQUENCE VALVE

## OFFSET SLIDING SPOOL

### 1SB10



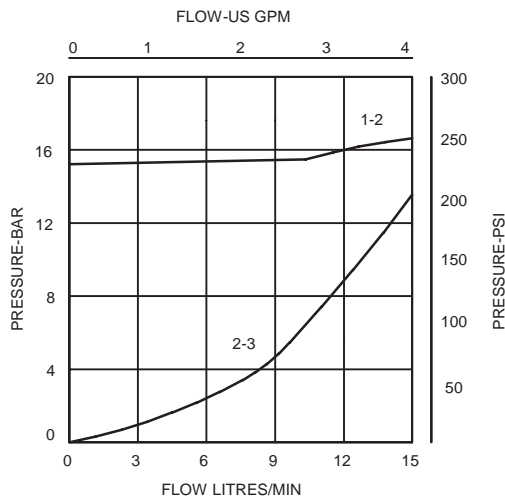
### APPLICATION

This valve provides a bias so that a predetermined pressure (15 bar) has to be reached before the valve will switch. In a typical brake circuit the brake will be held on until system pressure reaches the bias pressure. Once this pressure has been reached the valve will switch and supply pressure to the brake to hold it off. If the pressure then falls below the bias pressure the valve will again switch, applying the brake in a controlled manner.

### OPERATION

When the pressure in the inlet line is below the switching pressure (15 bar), the outlet will be connected to the tank, the spool being held in place by the spring force. When the pressure in the inlet line exceeds the switching pressure, the spool will slide back, opening inlet to outlet.

### PRESSURE DROP



### FEATURES

Cartridge design enabling speedy servicing when mounted in a body or in a composite manifold.

### SPECIFICATIONS

Figures based on: Oil Temp = 40°C Viscosity = 40 cSt

<b>Rated Flow</b>	10 litres/min (2.5 US GPM)	
<b>Max Setting</b>	350 bar (5000 psi)	
<b>Cartridge Material</b>	All working parts hardened and ground steel. External surfaces zinc plated	
<b>Body Material</b>	Standard steel	
<b>Mounting Position</b>	Unrestricted	
<b>Cavity Number</b>	A893 (See Section 17)	
<b>Torque Cartridge into Cavity</b>	60 Nm (44 lbs ft)	
<b>Weight</b>	1SB10	0.12 kg (0.26 lbs)
	1SB15	1.0 kg (2.2 lbs)
<b>Seal Kit Number</b>	SK182 (Nitrile)	SK182V (Viton)
<b>Recommended Filtration Level</b>	BS5540/4 Class 18/13 (25 micron nominal)	
<b>Operating Temp</b>	-20°C to +90°C	
<b>Leakage</b>	50 millilitres/min nominal	
<b>Nominal Viscosity Range</b>	5 to 500 cSt	

13

### Integrated Hydraulics Ltd

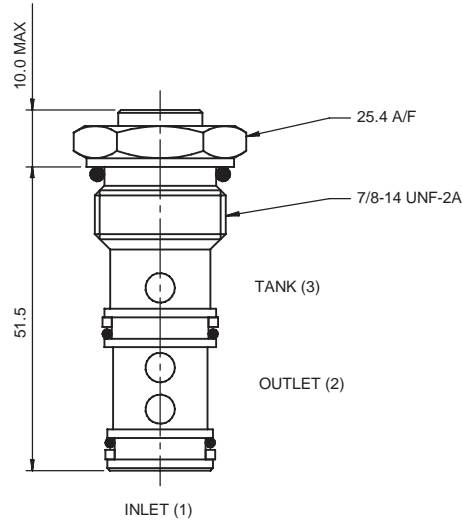
Collins Road, Heathcote Ind. Est., Warwick, CV34 6TF, UK.  
Tel: +44 (0) 1926 881171 Fax: +44 (0) 1926 315729  
Website: www.integratedhydraulics.com

### Integrated Hydraulics Inc

7047 Spinach Drive, Mentor, Ohio 44060, USA  
Tel: (440) 974 3171 Fax: (440) 974 3170  
Website: www.integratedhydraulics.com

## CARTRIDGE ONLY

BASIC CODE: 1SB10

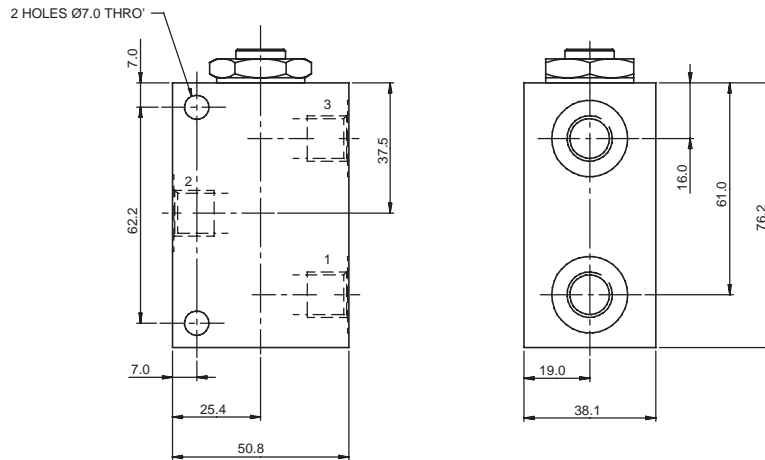


## COMPLETE VALVE 3/8" PORTS

BASIC CODE: 1SB15

Body ONLY part numbers

SAE, aluminium	BSP, steel	SAE, steel
3/8" A10715	1/4" A1882	3/8" A7371
	3/8" A1883	



Where measurements are critical request certified drawings

## ORDERING CODE EXAMPLE

**1SB\*\* 3W S 377**

### Basic Code

1SB10 = Cartridge Only  
1SB15 = Cartridge and Body

### Port Sizes - Bodied Valves Only

2W = 1/4" BSP Valve & Cyl Port.  
3W = 3/8" BSP Valve & Cyl Port.  
6T = 3/8" SAE Valve & Cyl Port.

### Body Material

377 = Steel  
Omit for aluminium (up to 210 bar)

### Seals

S = Nitrile (For use with most industrial hydraulic oils)  
SV = Viton (For high temperature and most special fluid applications)

We reserve the right to change specifications without notice