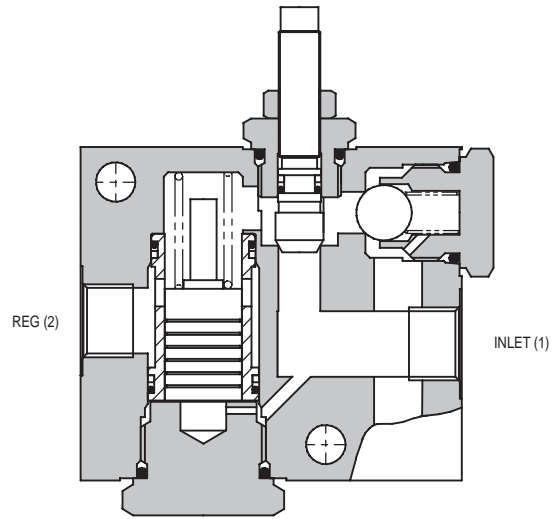
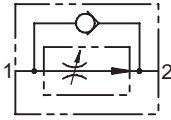




2FRC SERIES PRESSURE COMPENSATED

FLOW REGULATOR - RESTRICTIVE, WITH REVERSE CHECK

2FRC SERIES



APPLICATION

2FRC valves are two-port, restrictive flow regulators with a built in free flow check valve. Typical uses include the control of actuator speed by regulating the flow into or out of the actuator (meter-in or meter-out).

9

The flow (and actuator speed) will be largely independent of the load and the pressure conditions. If used to restrict flow from a fixed supply, for example a standard gear or piston pump, the valve will pass the required flow and any surplus flow will normally pass over the system relief valve.

OPERATION

Inlet flow passes through the adjustable orifice and the radial holes in the spool/sleeve assembly then out of the regulated port. The pressure drop across the orifice is sensed at each end of the spool, producing a force which, at the required flow rate, overcomes the spring force. The resultant movement of the spool regulates the flow by closing the radial valve ports.

The valve will pass flow in the return direction through the free flow check valve, allowing actuators to be operated with the minimum loss of pressure in the non-controlled direction.

FEATURES

Line body construction with through flow ports allows direct connection into hydraulic systems. Leakproof adjust screw gives easy, accurate adjustment to required flow setting. Hardened and ground working parts give accurate flow control and long working life.

SPECIFICATIONS

Figures based on: Oil Temp = 40°C Viscosity = 40 cSt

Rated Flow	REGULATED:	
	2FRC55	55 litres/min (14 US GPM)
Max Pressure	2FRC95	95 litres/min (25 US GPM)
	2FRC195	195 litres/min (50 US GPM)
Material	All working parts hardened and ground steel	
Body Material	Standard aluminium (up to 210 bar*) Add suffix '377' for steel option	
Mounting Position	Line mounted	
Weight	2FRC55	0.80 kg (1.76 lbs)
	2FRC95	1.10 kg (2.43 lbs)
	2FRC195	2.00 kg (4.41 lbs)
Seal Kit Number	2FRC55	SK447 (Nitrile) SK447V (Viton)
	2FRC95	SK656 (Nitrile) SK656V (Viton)
	2FRC195	SK693 (Nitrile) SK693V (Viton)
Recommended Filtration Level	BS5540/4 Class 18/13 (25 micron nominal)	
Operating Temp	-20°C to +90°C	
Nominal Viscosity Range	5 to 500 cSt	

*For applications above 210 bar please consult our technical department or use the steel body option.

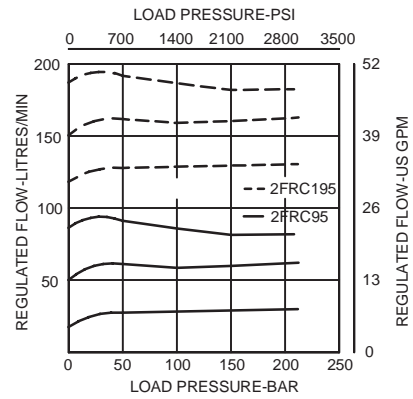
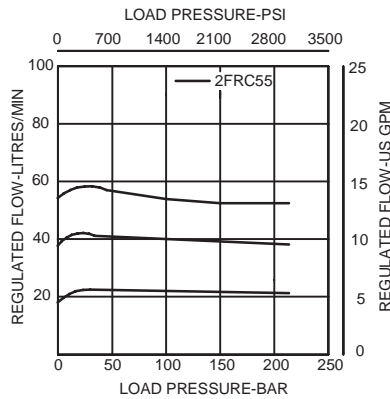
Integrated Hydraulics Ltd

Collins Road, Heathcote Ind. Est., Warwick, CV34 6TF, UK.
Tel: +44 (0) 1926 881171 Fax: +44 (0) 1926 315729
Website: www.integratedhydraulics.com

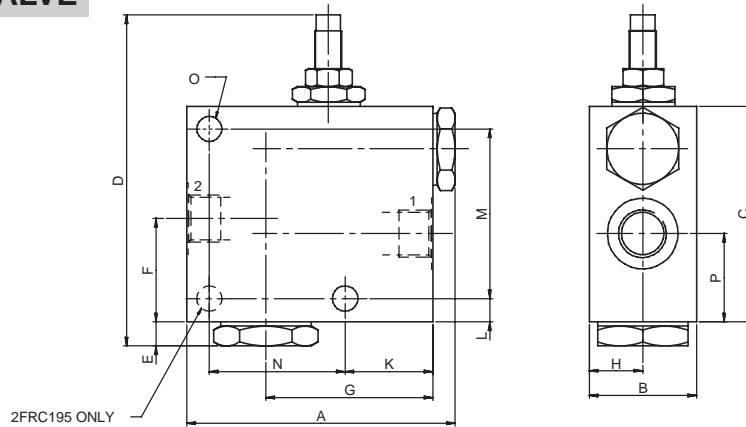
Integrated Hydraulics Inc

7047 Spinach Drive, Mentor, Ohio 44060, USA
Tel: (440) 974 3171 Fax: (440) 974 3170
Website: www.integratedhydraulics.com

PERFORMANCE



COMPLETE VALVE



Basic Code	Port Size	A	B	C	D	E	F	G	H	K	L	M	N	O	P
2FRC55	1/2"	96	38	76	118	7	37	37	19	31	8	60	48	10.5	31
2FRC95	3/4"	122	44	102	144	7	51.5	51.5	22	57	22	70	46	10.5	42
2FRC195	1"	150	50.8	102	144	7	44	44	25.4	72	10	-	62	13	30.5

Where measurements are critical request certified drawings

ORDERING CODE EXAMPLE

2FRC** P 6W 95 S

Basic Code
2FRC = Complete Valve

Adjustment Means
P = Leakproof Screw Adjustment
R = Handknob Adjustment
D = Detent Adjustment (2FRC95 only)
(See page 9-102 for dimensions)

Port Sizes - Bodied Valves Only
4W = 1/2" BSP 8T = 1/2" SAE
6W = 3/4" BSP 12T = 3/4" SAE
8W = 1" BSP 16T = 1" SAE

Seals

S = Nitrile (For use with most industrial hydraulic oils)
SV = Viton (For high temperature and most special fluid applications)

Adjustable Flow Range

55 = 0- 55 litres/min - 2FRC55
95 = 0- 95 litres/min - 2FRC95
195 = 0-195 litres/min - 2FRC195

We reserve the right to change specifications without notice